

40' ArcticStore^{PLUS} Portable Cold Store



Dimensions in mm	Ext.	Int.	Door
Length	12.192	11.200	
Width	2.438	2.294	1.250
Height	2.600	2.280	1.990

All dimensions are indicative for this size & type. Some variations are possible.

This is the top of the range model including new features minimising power consumption and with maximum regard for user safety. These are being introduced to UK container hire market from October 2008.

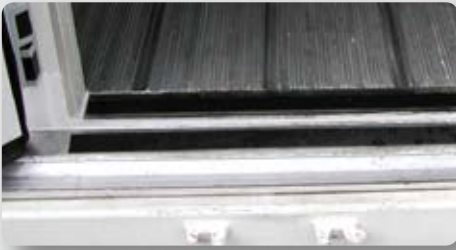
Precise and reliable temperature & environment control is provided by new Thermo King Magnum machine. The set point range is from -35C - +30C

Standard features include flat flooring for ease of use, 130cm wide butchers door with internal release, internal lighting and alarm with 2 sirens, heater cables to prevent the formation of ice around the door frame, pressure equalizing valve and a thermometer beside the butchers' door.



22 x EU 20 x UK

40' ArcticStore^{PLUS} Portable Cold Store



Anti-slip material for extra safety



Safety light is always lit



Internal lighting in a 40', safety lights and lamps with sensor



Internal halogen light with sensor, distress alarm and pressure valve



External light with sensor including alarm, siren, thermometer & pressure valve